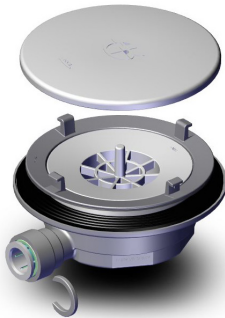




PW90 & ONYX PW90 15 & 22mm Shower Waste Installation Instructions



PW90- 15mm

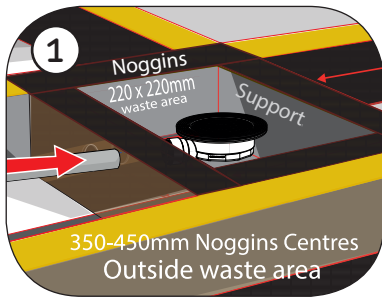


PW90- 22mm

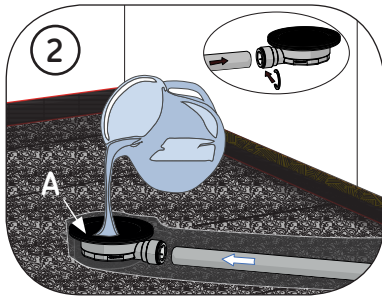
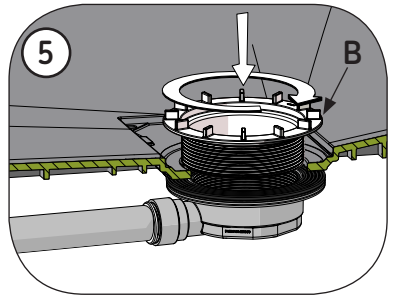


ONYX PW90- 22mm

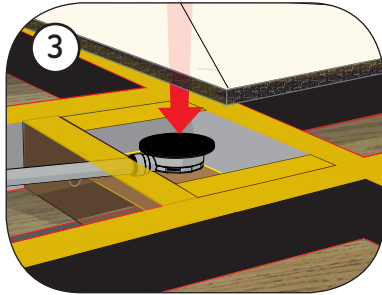
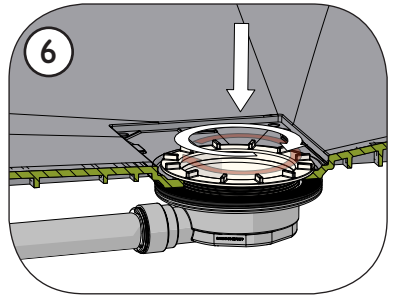
Installation Instructions



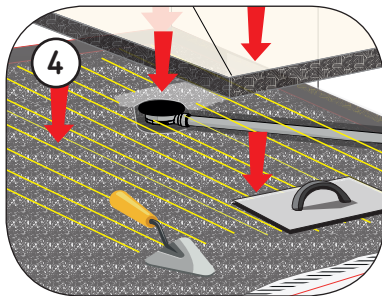
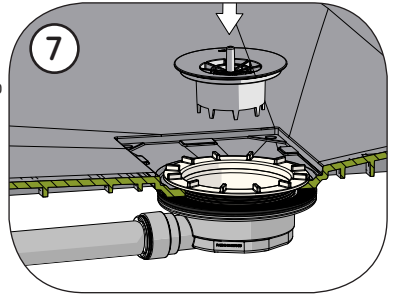
(1) As a “dry run”, first place the tray into the desired location either into wooden or solid floors. Determine the position, the depth and the clearance required for the waste with at least a 1 in 40 fall from the waste to the outlet pipe. Ensure there is sufficient support around the waste area, see separate tray instructions.



(2) Insert the 15/22mm waste outlet pipe into the waste body and insert the “C” clip to seal the outlet pipe. Check the pipe connection is correctly sealed and watertight by pouring some water through it. Ensure that the rubber clamping ring seal (A) is positioned into the recessed section on the top of the waste body before connecting to the tray.



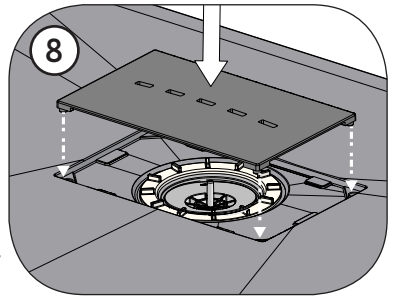
(3-4) Apply flexible adhesive to the tray and ensure that the tray is level. Lower the tray into position either into or onto wooden or concrete floors and then realign with the waste body.



(5-6) Ensure that the clamping ring (B) is screwed correctly to the waste body. Do not over tighten but ensure a tight seal.

(7) Lower the waste trap body into waste main body and ensure a tight seal is achieved.

(8) Fit the cover ensuring the location pegs are inserted fully home into the cover.



User Care Instructions

AKW wastes are designed for low maintenance and reliable operation. The water trap is located inside the waste body and should be checked as part of a planned maintenance programme. Any part showing evidence of damage or misuse must be replaced.

Keeping your wastes clean

This product should be cleaned periodically to remove any accumulation of hair or other waste material, using normal domestic bathroom cleaning materials. First remove the cover. Then lift out the trap body. Wash with warm soapy water taking care not to damage the rubber seal. Always face the dry trap arrow pointing towards the waste outlet pipe after cleaning.

Disinfecting

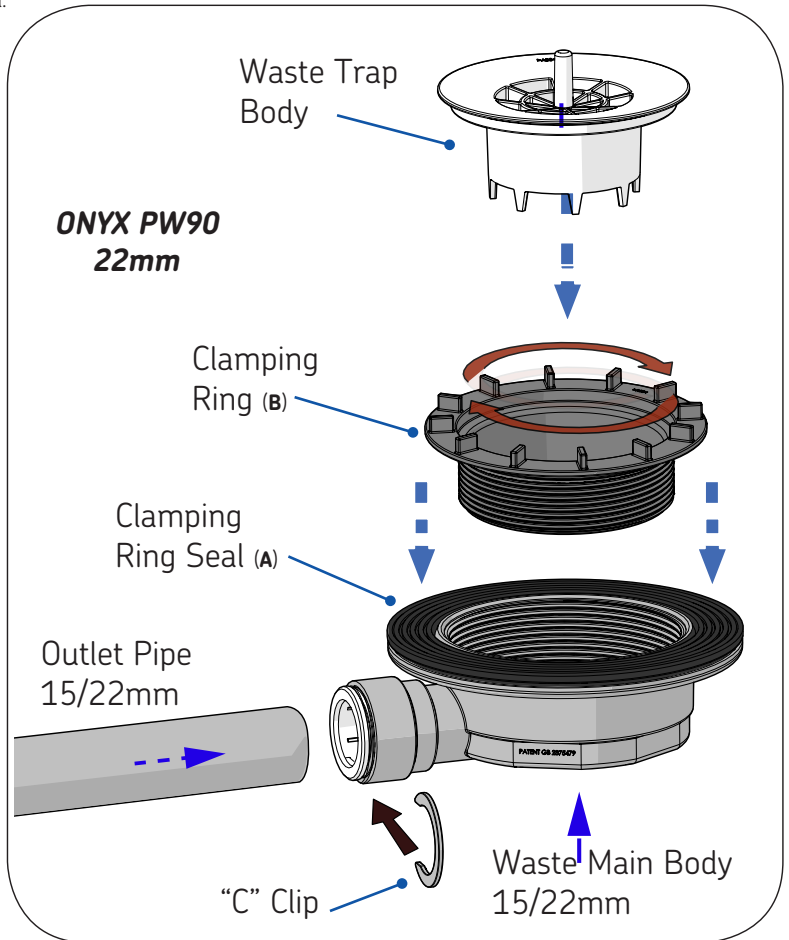
Where disinfecting is necessary, standard procedures for disinfecting equipment should be used, taking due care and attention to the warning signs concerning possible effects of aggressive chemicals on plastics.

After cleaning, always flush down with water then wipe thoroughly with a damp cloth to remove any cleaning material residues before drying.

Do not use strong or concentrated acidic, alkaline or other cleaning materials as these may discolour or otherwise damage the product. Do not use abrasive cloths. AKW does not approve or recommend autoclave cleaning of any of the components due to the damage which this can cause to the special engineering plastics used in the construction of this product.

Packaging

Wastes are supplied in a polypropylene (PP) bag to keep the product unsoiled until installation; it may also be packed in a cardboard box. Both are suitable for recycling operations and should be disposed of in accordance with local recycling regulations.



Important Safety Information



ALWAYS read these installation instructions carefully before installing this product and leave with the end user for future reference.



ALWAYS have the waste installed by an experienced installer.



ALWAYS match the correct waste to the shower tray.



ALWAYS test the waste outlet and seals for water tightness before installing the tray as this will be difficult once the shower tray is installed.



NEVER use the waste without the unit fully assembled and the clamping ring seal in place.



Caution always check for electric cables and water pipework before cutting into floor boards or drilling into surfaces.



Beware a pinch hazard may be present around the edges during installation.

Technical Help line
01905 560219

Orderline
01905 823299

General Enquiries
01905 823298

Fax
01905 823297

Website
www.akw-ltd.co.uk

Quotes & orders email
orders@akw-ltd.co.uk

Enquiries email
sales@akw-ltd.co.uk
technicalenquiries@akw-ltd.co.uk

Post
AKW, Pointon Way,
Hampton Lovett,
Droitwich Spa,
WR9 0LR



For the latest AKW product news scan this QR code with your device.

Guarantee

The guarantee applies only to manufacturing or material defects conditional on the correct installation of the product and does not apply to blockages, inappropriate use or accidental damage. This does not cover damage or defects that result from incorrect installation, lack of maintenance including the build up of grime, dirt or lime-scale and water-borne debris. Damage resulting from inappropriate cleaning or water ingress, damage or defects that result from repairs or modifications undertaken by persons who are not installer or maintenance engineers.

What to do if something goes wrong?

In the event that you should encounter a problem with this product, please contact your local installer and if this does not resolve the issue, then contact AKW technical team who will provide further advice and, if necessary, arrange for a maintenance engineer to visit and report any issues.

As part of our quality and training program, calls may be monitored or recorded. None of the foregoing affects your statutory rights.